

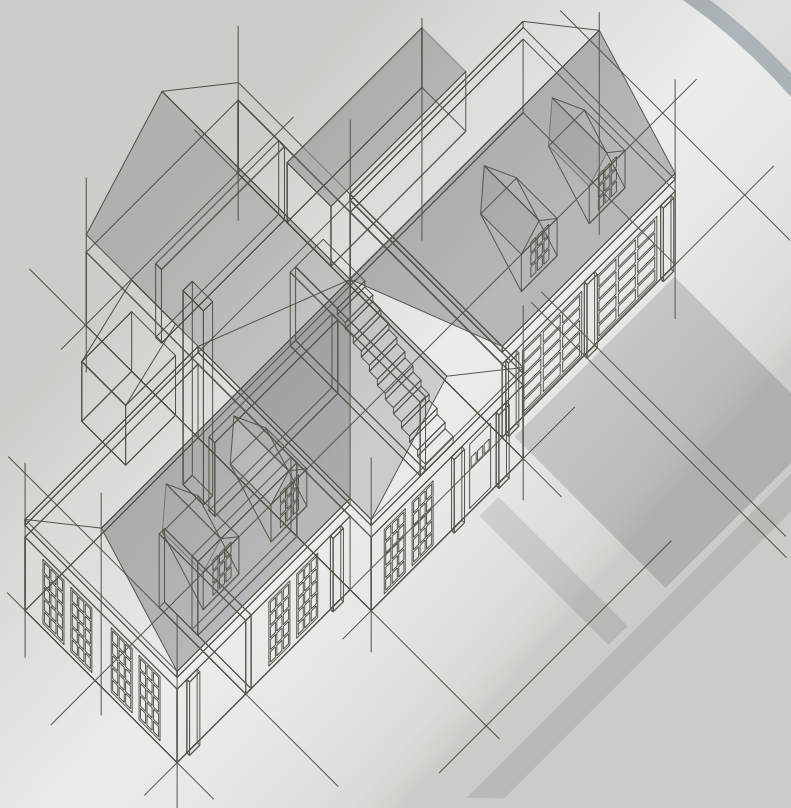
2016

# ELEMENT<sup>o</sup>

the perfect degree of comfort

HEATING | VENTILATION | AIR CONDITIONING

full line product guide





## Central Air Conditioners

### Product Features

- High efficiency scroll compressor - rotary compressor in 1.5, 2 and 2.5 Ton 13 SEER models
- Aluminum fin coils
- Cabinets are painted galvanized steel
- Control panel located in corner for easy installation
- 5 Year Parts, Outdoor Coil & Compressor Limited Warranty, 10 Year when registered

Parts, Coil & Compressor

**10** year limited warranty

### Specifications

13 SEER	WOVA-18CN1-M13T-N	WOVA-24CN1-M13T-N	WOVA-30CN1-M13T-N	WOVC-36CN1-M13-N	WOVD-42CN1-M13L-N	WOVD-48CN1-M13L-N	WOVA-60CN1-M13L-N
Nom Size	1.5 TON	2 TON	2.5 TON	3 TON	3.5 TON	4 TON	5 TON
Cooling Capacity (BTU/H)	18,000	24,000	30,000	36,000	42,000	48,000	60,000
Unit Dimensions	21 7/8" X 24 15/16" X 21 7/8"	23 5/8" X 24 15/16" X 23 5/8"	28" X 24 15/16" X 28"	29 1/8" X 24 15/16" X 29 1/8"	28" X 33 3/16" X 28"	28" X 33 3/16" X 28"	29 1/8" X 33 3/16" X 29 1/8"
Line Size	3/8 - 3/4	3/8 - 3/4	3/8 - 3/4	3/8 - 3/4	3/8 - 3/4	3/8 - 7/8	3/8 - 7/8
MOP (AMPS)	20	30	30	35	40	50	60

14 SEER	WOVA-18CN1-M14-N	WOVA-24CN1-M14-N	WOVA-30CN1-M14-N	WOVA-36CN1-M14-N	WOVA-42CN1-M14-N	WOVA-48CN1-M14-N	WOVA-60CN1-M14-N
Nom Size	1.5 TON	2 TON	2.5 TON	3 TON	3.5 TON	4 TON	5 TON
Cooling Capacity (BTU/H)	18,000	23,800	30,000	36,000	42,000	48,000	57,000
Unit Dimensions	21 7/8" X 24 15/16" X 21 7/8"	23 5/8" X 24 15/16" X 23 5/8"	28" X 24 15/16" X 28"	29 1/8" X 24 15/16" X 29 1/8"	28" X 33 3/16" X 28"	28" X 33 3/16" X 28"	29 1/8" X 33 3/16" X 29 1/8"
Line Size	3/8 - 3/4	3/8 - 3/4	3/8 - 3/4	3/8 - 3/4	3/8 - 3/4	3/8 - 7/8	3/8 - 7/8
MOP (AMPS)	20	30	30	35	40	50	60

16 SEER	WOVA-18CN1-M16-N	WOVA-24CN1-M16-N	WOVA-30CN1-M16-N	WOVA-36CN1-M16-N	WOVA-42CN1-M16-N	WOVA-48CN1-M16-N	WOVA-60CN1-M16-N
Nom Size	1.5 TON	2 TON	2.5 TON	3 TON	3.5 TON	4 TON	5 TON
Cooling Capacity (BTU/H)	18,000	24,000	30,000	36,000	42,000	48,000	60,000
Unit Dimensions	28" X 24 15/16" X 28"	29 1/8" X 24 15/16" X 29 1/8"	29 1/8" X 24 15/16" X 29 1/8"	29 1/8" X 33 3/16" X 29 1/8"	29 1/8" X 33 3/16" X 29 1/8"	29 1/8" X 33 3/16" X 29 1/8"	29 1/8" X 33 3/16" X 29 1/8"
Line Size	3/8 - 3/4	3/8 - 3/4	3/8 - 3/4	3/8 - 7/8	3/8 - 7/8	3/8 - 7/8	3/8 - 7/8
MOP (AMPS)	16	16	16	16	16	16	15



## Central Heat Pumps

### Product Features

- High efficiency scroll compressor
- Internally protected against high temperature motor overload conditions
- Aluminum fin coils
- Cabinets are painted galvanized steel
- Compressor Crankcase heater
- High and low pressure switch
- Low pressure inspect valve
- Control panel located in corner for easy installation
- 5 Year Parts, Outdoor Coil & Compressor Limited Warranty, 10 Year when registered

Parts, Coil & Compressor

**10** year limited  
warranty

### Specifications

	WOVA-18HN1-M14C-N	WOVA-24HN1-M14C-N	WOVA-30HN1-M14C-N	WOVA-36HN1-M14-N	WOVA-42HN1-M14-N	WOVA-48HN1-M14-N	WOVA-60HN1-M14-N
Nom Size	1.5 TON	2 TON	2.5 TON	3 TON	3.5 TON	4 TON	5 TON
SEER	14	14	14	14	14	14	14
Cooling Capacity (BTU/H)	18,000	23,800	30,000	36,000	42,000	48,000	57,000
Heating Capacity (BTU/H)	18,000	23,800	30,000	36,000	40,000	48,000	56,000
HSPF	7.8	7.8	8.3	8.3	8.3	8.3	8.3
Unit Dimensions	21 7/8" X 24 15/16" X 21 7/8"	23 5/8" X 24 15/16" X 23 5/8"	28" X 24 15/16" X 28"	29 1/8" X 24 15/16" X 29 1/8"	28" X 33 3/16" X 28"	28" X 33 3/16" X 28"	29 1/8" X 33 3/16" X 29 1/8"
Line Size	3/8 - 3/4	3/8 - 3/4	3/8 - 3/4	3/8 - 3/4	3/8 - 3/4	3/8 - 7/8	3/8 - 7/8
MOP (AMPS)	20	30	30	35	40	50	60

	WOVA-18HN1-M16-N	WOVA-24HN1-M16-N	WOVA-30HN1-M16-N	WOVA-36HN1-M16-N	WOVA-42HN1-M16-N	WOVA-48HN1-M16-N	WOVA-60HN1-M16-N
Nom Size	1.5 TON	2 TON	2.5 TON	3 TON	3.5 TON	4 TON	5 TON
SEER	16	16	16	16	16	16	16
Cooling Capacity (BTU/H)	18,000	24,000	30,000	36,000	42,000	48,000	60,000
Heating Capacity (BTU/H)	17,500	23,200	29,000	35,000	42,000	45,000	55,500
HSPF	9	9	9	9	9	9	9
Unit Dimensions	28" X 24 15/16" X 28"	29 1/8" X 24 15/16" X 29 1/8"	29 1/8" X 24 15/16" X 29 1/8"	29 1/8" X 33 3/16" X 29 1/8"	29 1/8" X 33 3/16" X 29 1/8"	29 1/8" X 33 3/16" X 29 1/8"	29 1/8" X 33 3/16" X 29 1/8"
Line Size	3/8 - 3/4	3/8 - 3/4	3/8 - 3/4	3/8 - 7/8	3/8 - 7/8	3/8 - 7/8	3/8 - 7/8
MOP (AMPS)	16	16	16	16	16	16	15



## Mid-Efficiency Gas Furnace

### Product Features

- Dependable, proven single-stage design
- Natural gas and propane models available
- Hot surface ignition for dependable operation and reduced energy costs
- Durable heat exchangers
- Industry standard cabinet sizes for add-on cooling applications
- Flex Fit installation options: horizontal left and right, upflow and downflow
- 5 Year Parts Warranty, 10 Year when registered
- 10 Year Heat Exchanger Warranty, 20 Year when registered

Parts

**10** year limited warranty

Heat Exchanger

**20** year limited warranty

### Multi Speed (PSC) Technology (PSC – Permanent Split Capacitor)

The mid-efficiency gas furnace features a multi-speed PSC motor that achieves prompt start up for reliable comfort. The blower is dynamically balanced for quiet operation so you can feel the temperature adjust in your home without excessive noise levels.

### Specifications

	WGS80M050A3A-N	WGS80M070A3A-N	WGS80M080B4A-N	WGS80M090B4A-N	WGS80M110C5A-N	WGS80M135D5A-N
BTU /h	50,000	70,000	80,000	90,000	110,000	135,000
AFUE	80%	80%	80%	80%	80%	80%
CABINET DIMENSIONS	WGS80M050A3A-N	WGS80M070A3A-N	WGS80M080B4A-N	WGS80M090B4A-N	WGS80M110C5A-N	WGS80M135D5A-N
Width (in)	14 ½"	14 ½"	17 ½"	17 ½"	21"	24 ½"
Depth (in)	28 ½"	28 ½"	28 ½"	28 ½"	28 ½"	28 ½"
Height (in)	33 ¾"	33 ¾"	33 ¾"	33 ¾"	33 ¾"	33 ¾"
MOTOR	WGS80M050A3A-N	WGS80M070A3A-N	WGS80M080B4A-N	WGS80M090B4A-N	WGS80M110C5A-N	WGS80M135D5A-N
Motor Type	PSC	PSC	PSC	PSC	PSC	PSC







## Heat Pump Packaged Unit

### Product Features

- High-efficiency 14 SEER ratings
- Architecturally compatible, anti-rust steel cabinets with 1,000-hour salt spray tested
- High-efficiency compressors for smoothly, quietly and consistent operation
- Internal safeguards protect compressor against high pressure, low pressure, coil temperature and power surge
- Reliable thermostatic operation
- Auxiliary electric heaters 5kW, 7.5kW, 10kW, 15kW, 20kW and 25kW
- 5 Year Parts, Coil & Compressor Warranty, 10 Year when registered
- 10 Year Heat Exchanger Warranty

Parts, Coil & Compressor

**10** year limited warranty

Heat Exchanger

**10** year limited warranty

### Specifications

	WRC-24HWN1-M14-N	WRC-30HWN1-M14-N	WRC-36HWN1-M14-N	WRC-42HWN1-M14-N	WRC-48HWN1-M14-N	WRC-60HWN1-M14-N
SEER	14	14	14	14	14	14
Heating Capacity BTU/H	22,400	30,000	34,200	40,000	46,500	57,000
HSPF BTU/H	8.0	8.0	8.0	8.0	8.0	8.0
Cooling Capacity BTU/H	22,800	30,000	34,200	40,500	46,500	57,000
COMPRESSOR & COIL	WRC-24HWN1-M14-N	WRC-30HWN1-M14-N	WRC-36HWN1-M14-N	WRC-42HWN1-M14-N	WRC-48HWN1-M14-N	WRC-60HWN1-M14-N
Compressor Type	GMCC - Rotary	GMCC - Rotary	LG - Scroll	LG - Scroll	LG - Scroll	LG - Scroll
Indoor Fan Motor	PSC - 1/4 hp	ECM - 1/2 hp	ECM - 1/2 hp	PSC - 3/4 hp	PSC - 3/4 hp	ECM - 3/4 hp
Outdoor Fan Motor	PSC - 1/12 hp	PSC - 1/6 hp	PSC - 1/6 hp	PSC - 1/3 hp	PSC - 1/3 hp	PSC - 1/3 hp
DIMENSIONS	WRC-24HWN1-M14-N	WRC-30HWN1-M14-N	WRC-36HWN1-M14-N	WRC-42HWN1-M14-N	WRC-48HWN1-M14-N	WRC-60HWN1-M14-N
Net/Gross Weight (lbs)	481/500	500/520	531/551	582/602	580/600	608/626
Width (in)	52"	52"	52"	58"	58"	58"
Height (in)	25"	25"	25"	33"	33"	33"
Depth (in)	38"	38"	38"	38"	38"	38"



# ELEMENT<sup>o</sup>

the perfect degree of comfort



Authorized Dealer

24 Napoleon Road, Barrie, Ontario, Canada L4M 0G8  
103 Miller Drive, Crittenden, Kentucky, USA 41030  
7200 Trans Canada Highway, Montreal, Quebec, Canada H4T 1A3

Tel: 1-866-820-8686 Fax: 705-725-1150  
napoleonheatingandcooling.com



All specifications and designs can change without notice to allow for on-going product improvement. Images may not be exactly as shown. Consult your owners manual for current information.  
Check all local and national building codes and gas regulations. Napoleon is a registered trademark of Wolf Steel Ltd. © Wolf Steel Ltd.

ABRNEFL 09/2015